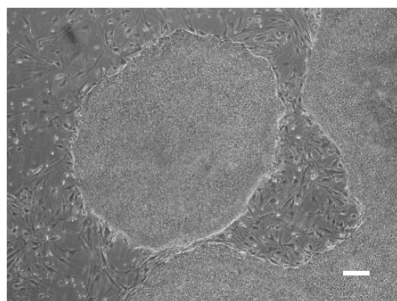


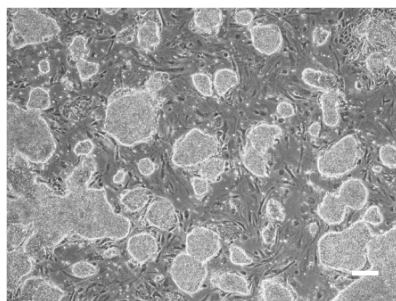
**A**

hESC/MEF+bFGF;  
Adaptation LIF-5i



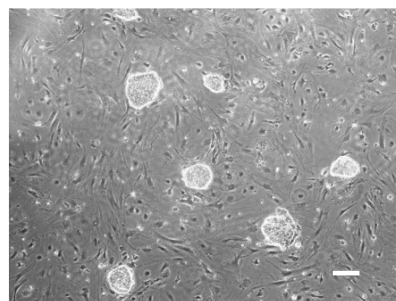
$4 \times 10^6$  cells/well

LIF-3i/MEF  
pre-cryopreservation

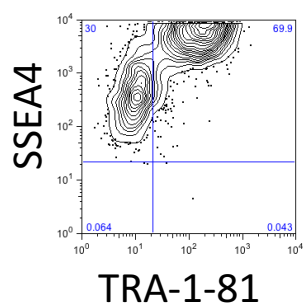


6 wells =  $20 \times 10^6$  cells;  
 $1 \times 10^6$  cells/vial frozen

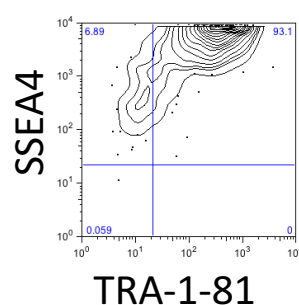
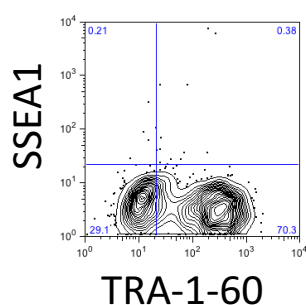
LIF-3i/MEF  
post-thaw



$1 \times 10^6$  cells/well thawed;  
recovery = 250,000 cells  
(w/o ROCK inhibitor)

**B**

before pre-plating



post pre-plating  
(1 hour on 0.1% gelatin)

